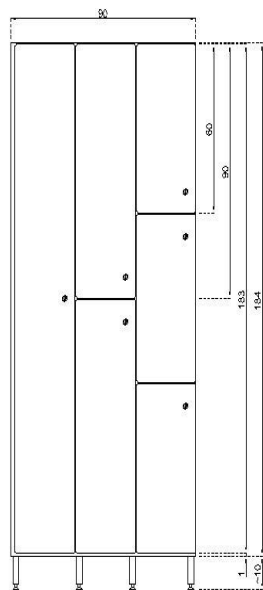
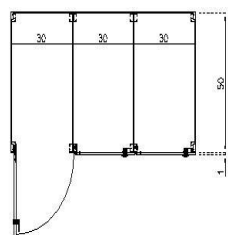
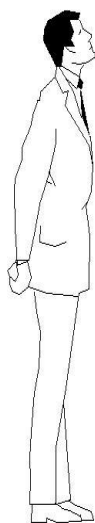
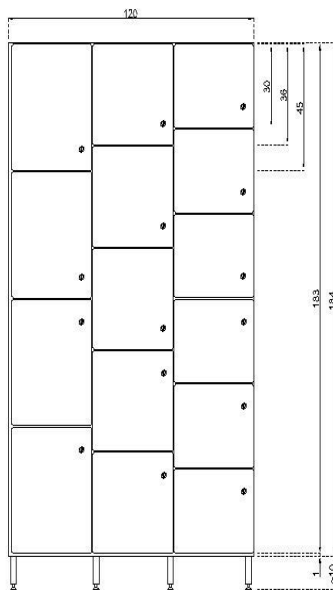
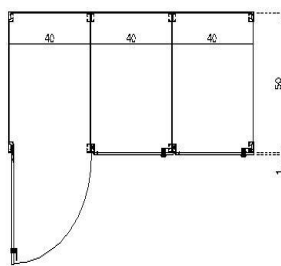


# Szafki HPL MH

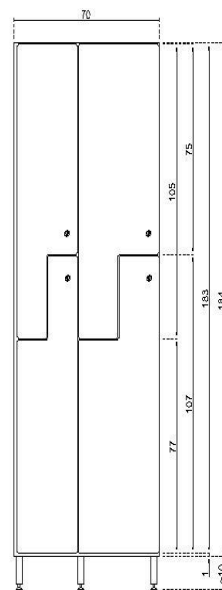
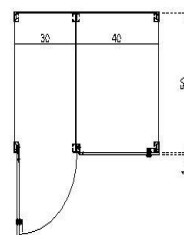
Dane techniczne



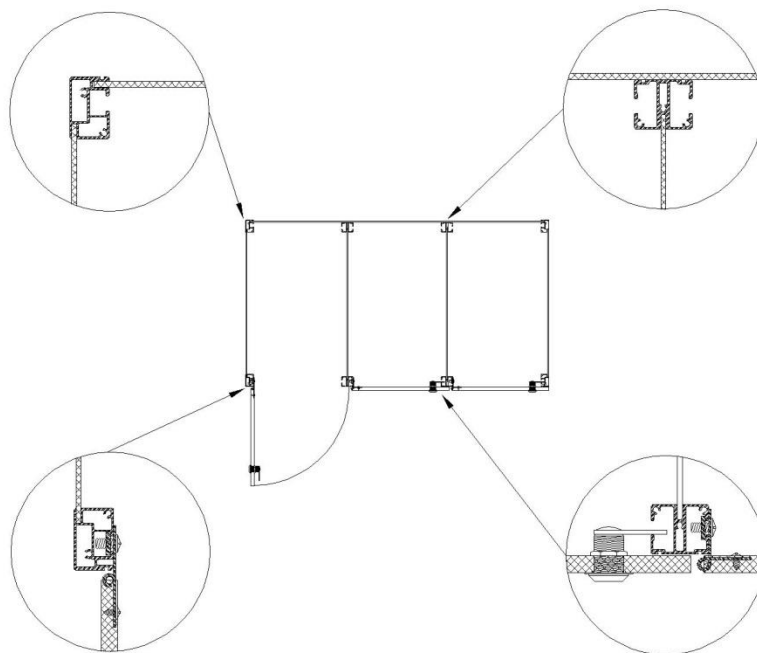
11 12 13



14 15 16

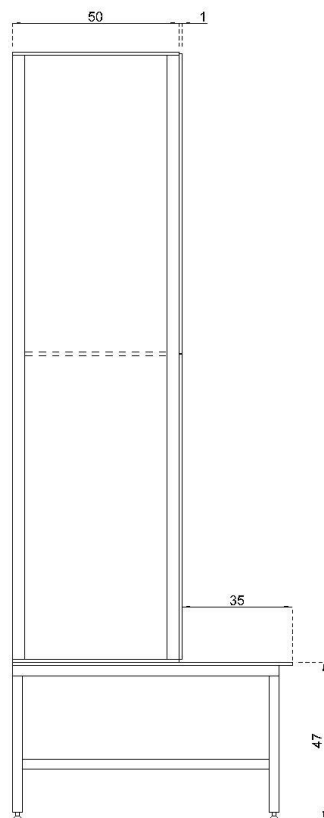


L1 L1

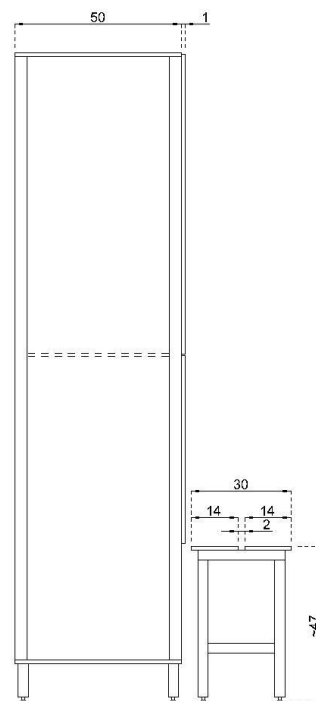


# Szafki HPL MH

Specyfikacja systemu

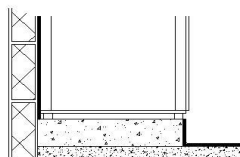


Ławka stała

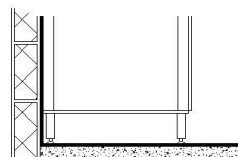


Ławka dostawiana

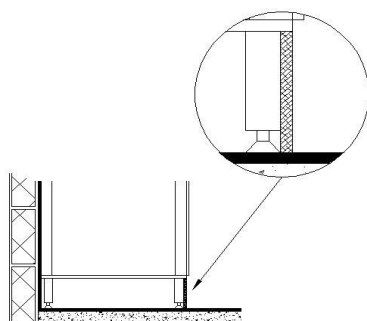
## Możliwości osadzenia szafek



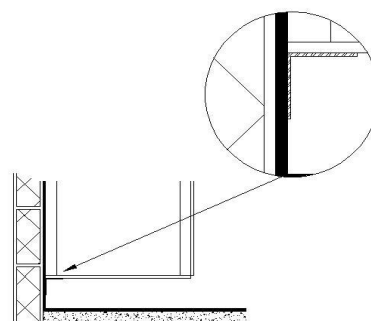
Szafka na murku



Szafka na nóżkach



Szafka na nóżkach  
z blendą



Szafka "wisząca"